

DOWNED POWER LINES ACCIDENTS INVOLVING MOTOR VEHICLES

Follow these rules to stay safe around downed power lines.

Always assume that a downed power line is live and extremely dangerous.

STOP!

40 ft.

IF YOU'RE INSIDE THE VEHICLE

STEP 1

If you can **safely drive** out from under the power line or away from the source of electricity, do so. Travel at least the length of three cars (about 40 ft.) before stopping.

IF YOU'RE OUTSIDE THE VEHICLE

STEP 1

Stay at least **three car lengths** (about 40 ft.) away.

STEP 2

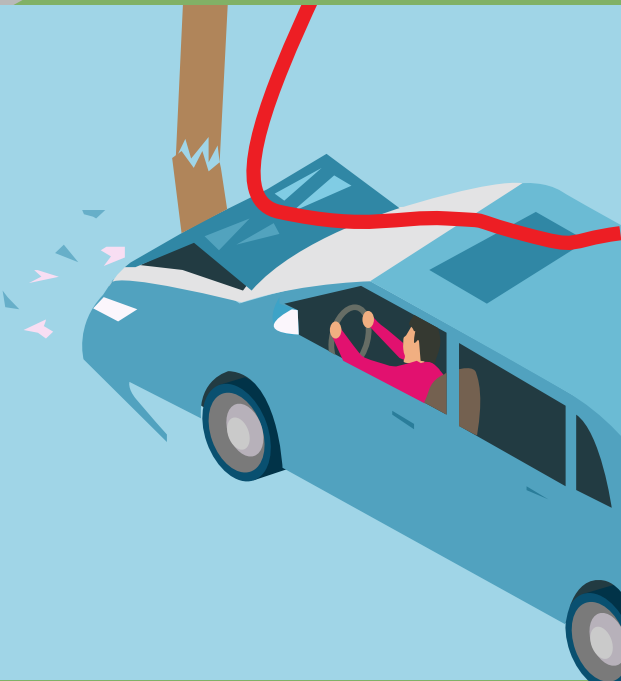
Tell anyone in the vehicle to **stay where they are**.

STEP 3

Call 911 and ensure no other bystanders move to within 40 ft. of the vehicle.

STEP 2

If you **can't drive** the vehicle - if you're injured, the vehicle is inoperable or there are obstacles - stay where you are until help arrives. Unless there's a secondary emergency - if the vehicle is on fire, for example - you're safer where you are.



STEP 3

If you **absolutely must get out** of the vehicle, don't touch the vehicle and the ground at the same time with any part of your body or clothing. Carefully follow the steps to the right of this box to exit the car and to move to a safe distance.

1

With the door open, prepare to jump. Stand up, elbows tucked into your stomach and your hands held close to your chest.

5

Call 911 and ensure that no bystanders move to within 40 ft. of the vehicle.

40 ft.

4

Keep shuffling until you're at least three car lengths away from the vehicle (about 40 ft.).

3

Shuffle with your feet together. Your feet must always be touching - the side of the heel of one foot should still be touching the side of the other when you start to move the other leg.

2

Jump out and away from the vehicle, taking care to land with your feet together and touching. Don't stumble.

